



# Moisture Tolerant Epoxy Resin for Online Application

## CORRO-DUR™ 192L

CORRO-DUR™ 192L was formulated to provide safe and effective sealing and reinforcement of surfaces. Its unique formulation has excellent tolerance to the dampness left in concrete after preparation for coating by high pressure water jetting.

The formulation is solvent-free to avoid objectionable odor and explosion hazards of epoxy solvents. It is non blushing and can be applied **online** underwater.

Recommended Fiber System (Corro Wrap™ WL):

1. BasRap™  
-Basalt Uni-Directional (Weight: 320gsm)
2. CRBX  
-E-glass Biaxial (Weight: 800gsm)



### TECHNICAL DATA

Mixing ratio	5:3 by volume
Pot life	Approx. 20 minutes at 25°C (77°F)
Dry time (touch)	4 hours at 25°C (77°F)
Dry time (hard)	3 hours (light services), 24 hours (heavy services) at 25°C (77°F)

### CURING SCHEDULE

Surface temperature @50% RH	Cure time (Light service)	Cure time (Full cure)
25°C (77°F)	3 Hours	24 Hours
35°C (95°F)	90 Minutes	12 Hours
45°C (113°F)	45 Minutes	6 Hours
55°C (131°F)	23 Minutes	3 Hours
65°C (149°F)	12 Minutes	90 Minutes



Versatile



Moisture tolerant



100% solids

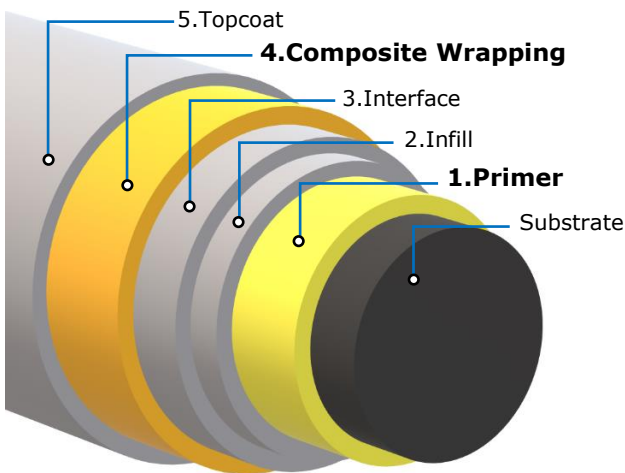


Odour free

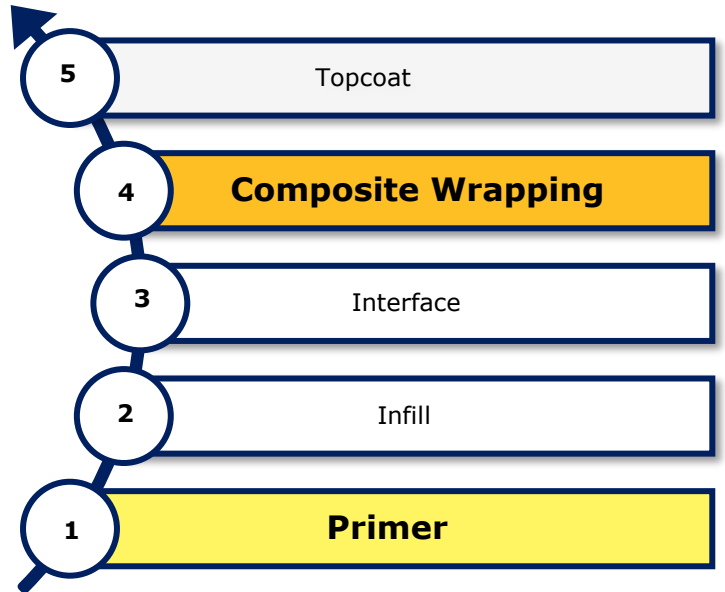


High performance

## APPLICATION



Corro-Dur™ 192L can be used as **Primer** and saturating agent for **Composite Wrapping**



## KEY BENEFITS

### **Online Application**

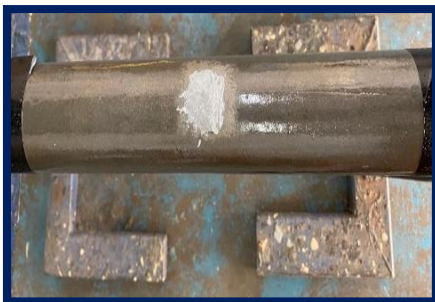
- Designed to be applied in online condition with the presence of moisture without a shutdown

### **Underwater application**

- Formulated to be applied for underwater application under immersed conditions

### **100% solids**

- No shrinkage, contraction or expansion during curing



1. Primer



2. Saturation of fiber



3. Composite Wrapping

For more information, please contact our representative:

**Corroserv (M) Sdn Bhd,**  
20 & 22, Jalan IM 14/15,  
Bandar Indera Mahkota, 25200  
Kuantan, Pahang, West Malaysia

**Tel: +609-5735623**  
**Email: admin@corroserv.com.my**



We are specialized in online repair/maintenance services as we offer comprehensive engineering services for the offshore, marine, petrochemical, power generation, food processing, palm oil processing and other industries throughout the region.